

**The Myall Lakes National Park**, which lies to the east of Bulahdelah, is the largest natural freshwater lake system on the New South Wales coast.

The term "myall" seems to be an Aboriginal word which was used to describe "wild Aborigines" as opposed to Aborigines living near settled European communities. The word was applied to this group of lakes because they were a wilderness relatively close to the city of Newcastle.

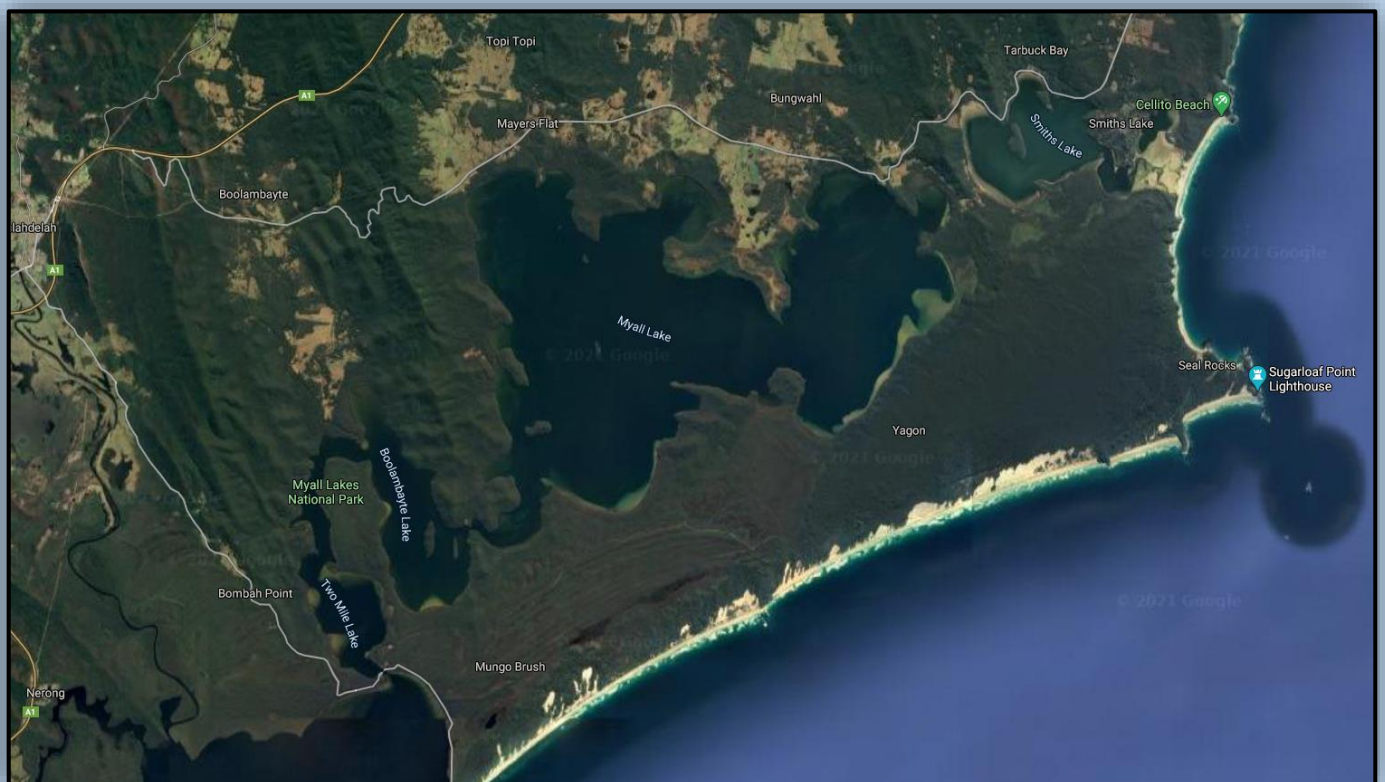
The Myall Lakes National Park covers 31,562 ha of headlands, forests, swampland, forest fringes to the west and nearly 10,000 ha of coastal lagoons which include - Myall Lake (5,800), Boolambyte Lake (1,100 ha) and Bombah Broadwater (2,400 ha) - and are linked by narrow waterways to form a continuous lake system which is joined to Port Stephens by the lower Myall River which becomes increasingly saline as it reaches the saltwater of Port Stephens.

The lakes have been listed as a wetland of international significance under the RAMSAR convention.

To the east, between the lakes and sea, are high sand dunes with varied vegetation cover. Along the coast are 40 km of lonely and isolated beaches. The park stretches from just north of Tea Gardens and Hawks Nest up the coast to Seal Rocks and inland to Bulahdelah. Not surprisingly there are diverse ecosystems - from coastal dunes to rainforest - which are conducive to rich plant communities and interesting wildlife.

### **Myall Lakes National Park**

The Myall Lakes National Park is an idyllic coastal location which is primarily about experiencing nature whether it is through bushwalking on the Mungo Track; experiencing the Aboriginal cultural heritage and huge sand dunes at Dark Point; or exploring the



rainforest at Mungo Brush. The extensive waterways are ideal for such relaxing activities as sailing, surfing, canoeing, kayaking, windsurfing, sunbathing, swimming, camping, water skiing and bushwalking. There is an excellent, downloadable brochure - <http://www.nationalparks.nsw.gov.au/~media/visitor/files/PDF/Brochures/myall-lakes-and-booti-pdf-new.aspx> - which outlines all the main attractions in the park.